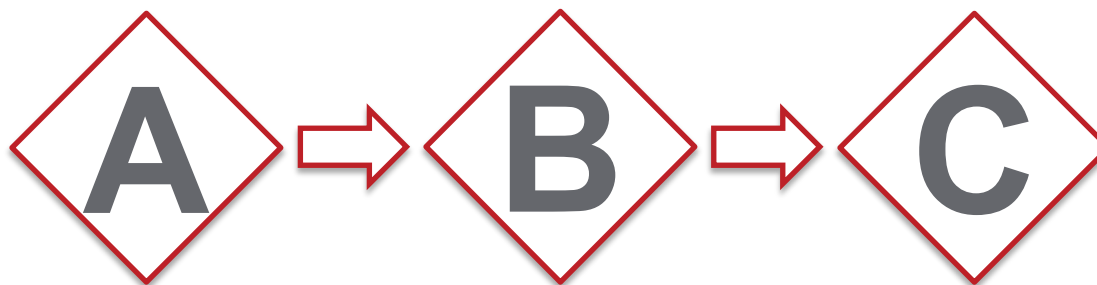


Installation manual

Quick start guide

How to install and configure

First time



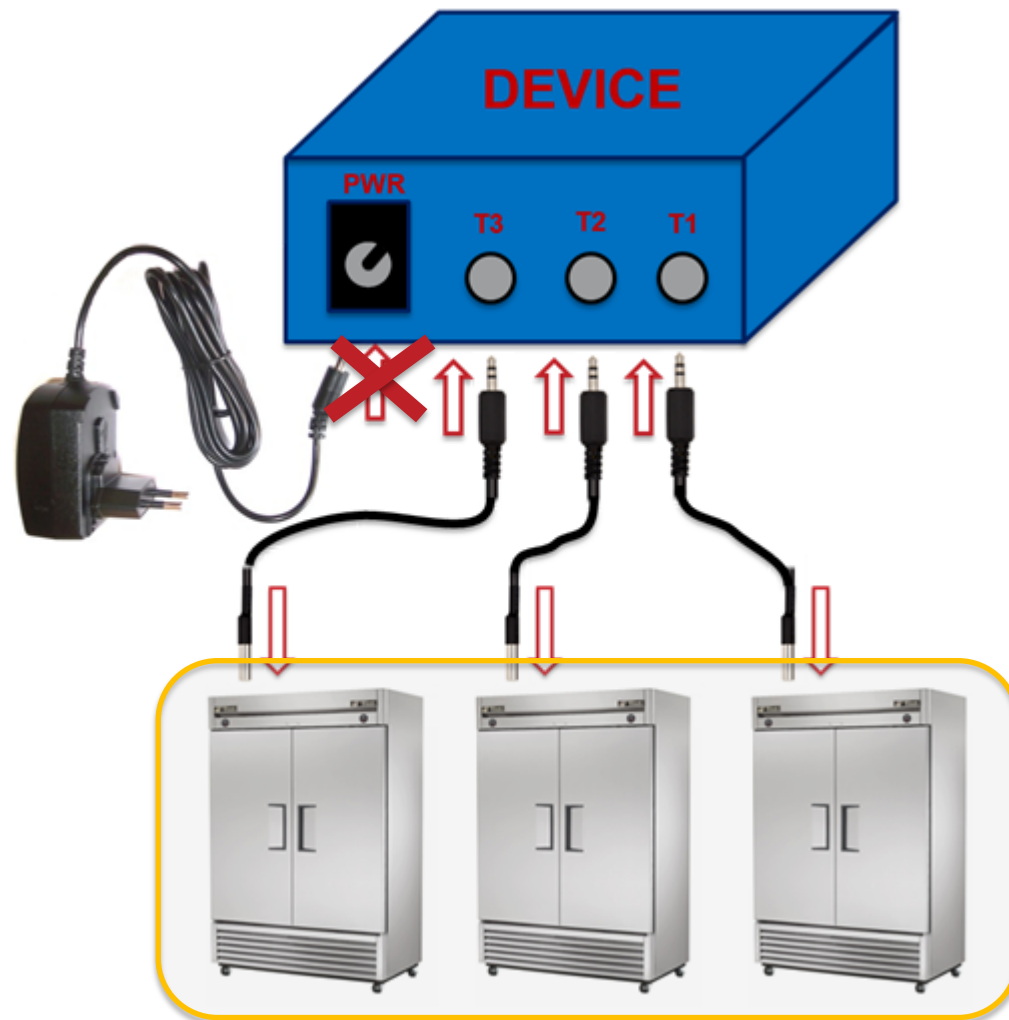
Reconfigure



A

Connect the cables

1. Place the **DEVICE** and install sensors in the **fridges**
2. Connect male jack to **T1, T2, T3**
3. Install power supply and **DO NOT** connect power cord to **PWR**



B

Configure device

1. Connect power cord to **PWR**
2. When you hear a «chirp», with smartphone, tablet or PC connect to WiFi access point named «mySsidXXXXXXXX»^(*)
3. Open a browser and navigate to <http://192.168.4.1>, click on the «SCAN» button
4. When the target WiFi is shown in the list, insert the password and conclude the configuration

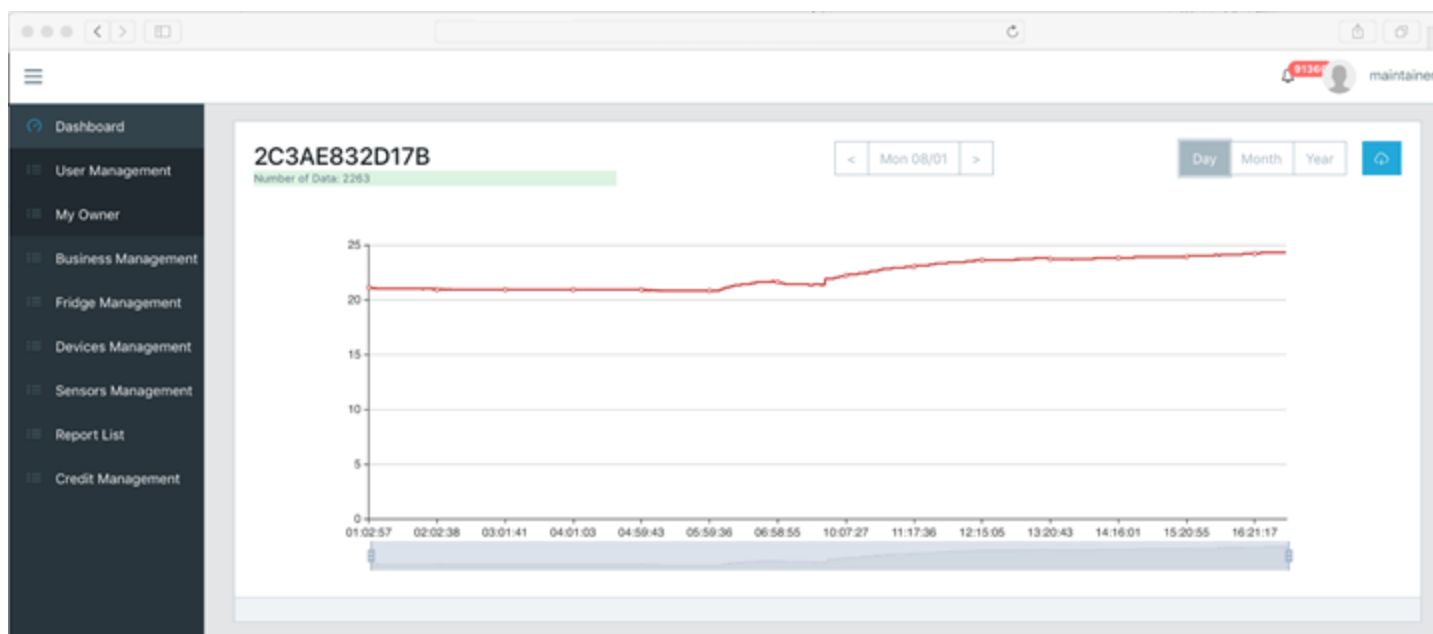


(*) XXXXXXXX is the unique identifier of the device

C

Complete on website

1. Login to the website <http://login.icebox4all.com>
2. Refine the configuration and the parameters as needed



D

Reset to Factory Default

1. Disconnect and connect power cord
2. When you hear a «long beep», press and hold the **RESET** button until 5 short beeps and a final long one are produced by the device
3. Disconnect power cord and proceed to **B**

